
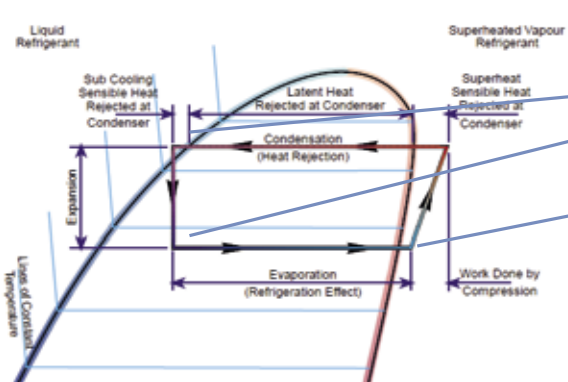



SOFTWARE AVAILABLE FROM WEB SITE



PFHE - S&T - BPHE



ONDA S.p.A.

onda@onda-it.com
www.onda-it.com

PLANT 1 Headquarters
Via Dante Alighieri, 27B
36065 Mussolente (VI)
Italy
t. +39 0424 87633

PLANT 2
Via L. Baden Powell, 11
36045 Lonigo (VI)
Italy
t. +39 0444 720720

PLANT 3
Via Vittoria, 158A
36065 Mussolente (VI)
Italy
t. +39 0424 87506

PLANT 4
Onda USA L.L.C.
600 London Rd
Delaware, OH 43015
t. +1 614 321 3342

ADVANCED HEAT EXCHANGERS

Onda France S.A.R.L.
320, Avenue Berthelot
69008 Lyon France
t. +33 472784606
m. +33 608341000
www.onda-fr.com
onda@onda-fr.com

Onda USA L.L.C.
600 London Rd
Delaware, OH 43015
t. +1 614 321 3342
www.onda-us.com
onda@onda-us.com

Onda RU
Mayakovskogo Street, 18a, Khimki,
Moscow Region, Russia 141400
t. +7 495 971 88 53
m. +7 916 676 16 54
www.onda-it.com
info@onda-ru.com

Onda Nordic OY
Lentolantie 22
36220 Kangasala Tampere, Finland
t. +35 8331437300
m. +35 8409012999
www.wttgroup.fi
pasi.makinen@wttgroup.fi

Onda Shanghai
Heat Exchanger Co., Ltd.
臨惠路 (上海) 热交换有限公司
Shanghai, Changning District,
Anhua Road 492, Building 1 Tower A, Room 126
上海市长宁区安化路492号1幢 (A座) 126室A092
t. +86 021 6056 4838 (ext.1000)
m. +33 6 08 34 10 00



ONDA CAN DEVELOP CUSTOMIZED PRODUCTS ON REQUEST

Thanks to its flexibility and a lean manufacturing process, Onda S.p.A. can manufacture special products, developed together with the customers. Both thermal and mechanical design may be carried out according to specific customer needs. Special finned exchanging tubes, designed and developed by Onda, are available too. **Materials:** Titanium, Copper Nickel, Superduplex, Copper, Stainless steel, Carbon steel **Special coating available** **Pressure:** up to 100 bar **Temperature:** from -57 °C to 250 °C **Overall dimensions:** outside diameter up to 2,3m, length up to 13m **Weight:** up to 25t



Onda manufactures a complete range of air heat exchangers.

- Air Coolers up to 180 kW
- Unit Coolers up to 180 kW
- Axial Condensers with a capacity between 5 and 2400 kW
- Liquid Coolers & Dry Coolers with capacities from 5 to 1800 kW offering the following options:
- -V- Design
- Up to 20 fans
- Max. length up to 13 m.



With the wide range of 15 different models of brazed heat exchangers, Onda has the answer for any application, coming both from refrigeration field (evaporation and condensation of freon from 10 to 750 kW) and from HVAC field for heating, sanitary water and air conditioning applications.



The range of gasket plate & frame heat exchangers is available in different models and dimensions. It always offers the best solution for all main heat exchange applications, like HVAC, Industry, Cogeneration, District Cooling & Heating.



Onda can manufacture S&T heat exchangers in different sizes and for different applications. In addition to the typical evaporators and condensers for HVACR, including the flooded evaporators, Onda has now the technical know-how and the production capacity to build big vessels (with shell diameter up to 2,3 m, and overall length above 10 m) suitable for several industrial and naval installations.

AIR HEAT EXCHANGERS

BRAZED PLATE

PLATE & FRAME

SHELL & TUBE



HVL-CVN Condensers
MVL-FVN-PFVN Dry-coolers



CND Condensers
FND - PFND Dry-coolers



CLV Condensers
FLV-PFLV Dry-coolers



E - A
Industrial air and unit coolers



FN-PFN
Dry-coolers



FLV Adiabatic liquid coolers



ED - AD
Dual discharge air and unit coolers



ET
Blast Freezer



EC - AC
Centrifugal air and unit coolers



S606 - S606M



S424
dual circuit



S404 - S404M



S222
dual circuit



S202 - S202M



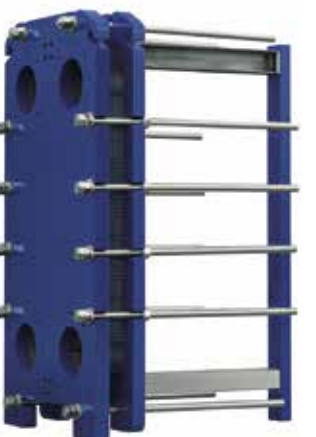
S182 - S182M



S101



GT025



GT022



GT021



GT015 / GP015



GT012



GG010 / GM010



GG009



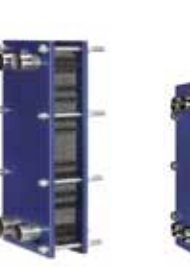
GG008



GG007



GG006



GG005



GG003



HC - CEV - CEO
Hermetic condenser



RL RL-V
Liquid receivers



OVS
Oil separators



BPR
BHE with receiver



OIL
Oil coolers



M - SM
Sea water condenser



C - L - R - B - HPC - LVC
Shell & tube condensers



LSE - SSE Straight tubes evaporators
for New refrigerant low GWP



MPE - LPE - HBE - HPE
Shell & tube evaporators



Modules (assembled evaporator & condensers)



WT - WTK
Water storage for evaporators



HF
Hybrid Film evaporators



FLT - FLS
Flooded evaporators

ADVANCED HEAT EXCHANGERS